

RC3000E Multi Service Access Node

Datasheet

Raisecom's RC3000E is a compact and cost-effective with the ability to access 30 channels voice intelligent multi service access multiplexer. It can provide maximum 8E1 capacity for accessing and transmission, and the crossconnect capacity is 512 × 512 64K. It provides full range of voice and digital data services to subscribers located at different locations require to interconnect and establish a voice and data network over E1 link.

The 19 inch 1U high RC3000E has capacity for 1 uplink slot and 3 downlink slots. It provides 8E1/4E1 electrical and 8E1 optical uplink cards, and a variety of

services interface cards, including FXO, FXS, E&M, Hot-line, magneto telephone, RS232, RS422, RS485, G.703, V24, V35, FE. These interfaces are compatible with other Raisecom's products such as RC3000-15, OPCOM3500E (SDH), RC3000, RC3101, and RC3201. So it is very flexible for grooming, concentration, broadcasting and cross connect as well as accessing diversified subscriber's business.

RC3000E can be managed by SNMP, Telnet and Console. Raisecom's network management platform NVIEW NNM is also available for figure information of the real-time monitoring, alarms, management and maintenance.

Specification

| Item | |
|-------------------------|---|
| Chassis(high) | 1U |
| Number of uplink-slots | 1 |
| Number of service-slots | 3 |
| Max. E1 channels | 8 |
| Cross-connect capacity | 512×512 64K |
| Max. FXO/FXS channels | 30 |
| Max. E&M channels | 24 |
| Max. V.35 channels | 3 |
| Max. FE channels | 3 |
| Physical Description | |
| Height | 47mm(1.9 in.) |
| Width | 483mm(19.0 in.) |
| Depth | 360mm(14.2 in.) |
| Power supply | DC:- 48V (-36V~72V) AC:220V (100V~240V) |
| Power consumption | ≤50W |
| Ringing generator | 75V; 25Hz |
| Operating Environment | |
| Temperature | -5° to 50° C |
| Air pressure | 86 to 106Kpa |
| Humidity | 5% to 95% relative humidity, noncondensing |

Chassis



RC3000E

Uplink Cards



RC3000E-UP-8E1



RC3000E-UP-4E1



RC3000E-UP-OPT-FE2E1

Downlink Cards



RC3000E-SUB-10FXO



RC3000E-SUB-10FXS



RC3000E-SUB-8EM

RC3000E Multi Service Access Node

Datasheet

Feature

- Conforms to Bellcore, IEEE and ITU standards
 - Integrated with digit/analogue access, duplex, cross, transmission and protocol conversion functions
 - Compact 1U high enclosure
 - Modular construction with one uplink slot and three services slots
 - Electrical and optical E1 uplink interfaces
 - The E1 uplink card support E1 channel protect function
 - Modularity and support hot swap
 - Flexible network topologies : Point-to-Point , Linear Drop/Insert,Star
 - Support 512×512 crossconnect ability base on 64K with signaling
 - Local and remote loopbacks
 - Support bert test function
 - Multipoint (multidrop) voice and data interfaces
- | Voice Interfaces: | FXO/S | Hot-line(FXS-FXS) |
|-------------------|--------------|-------------------|
| | 2/4 Wire E&M | Magneto Telephone |
- Data Interfaces:
 - G.703 co-directional at 64Kbps Data Interfaces
 - V.24 Synchronous Data Interface up to 128 Kbps
 - RS232 Asynchronous Data Interface up to 19.2Kbps
 - RS422 Asynchronous Data Interface up to 19.2Kbps
 - RS485 Asynchronous Data Interface up to 19.2Kbps
 - V.35 Synchronous Data Interface N×64 Kbps (N=1~31)
 - 10/100 Base-T Ethernet Interface N×64 Kbps (N=1~31)
- Programmable A,B signaling bits (time slot 16; E1 systems) supports all voice switching equipment
 - Support two clock mode : master and recovery
 - Remote Configuration Control and Performance Monitoring (RC3000E, RC3000,RC3101)
 - Support timeslot independently or SA4/SA5 as network management channle
 - Provide SNMP and console network management interfaces
 - SNMP agent for in-band and out-of-band network management using Raisecom's NNM View software

RelaQtive Standards

| | | | |
|-------------|-------------|-------------|-------------|
| ITU-T G.703 | ITU-T G.704 | ITU-T G.821 | ITU-T G.823 |
| ITU-T G.796 | ITU-T G.707 | ITU-T G.825 | ITU-T G.826 |
| ITU-T G.711 | ITU-T G.712 | ITU-T V.35 | ITU-T V.11 |
| ITU-T G.713 | ITU-T G.714 | ITU-T V.24 | ITU-T V.28 |
| ITU-T G.732 | ITU-T G.813 | IEEE 802.1 | IEEE 802.3 |

Downlink Cards



RC3000-SUB-D232



RC3000-SUB-D422



RC3000-SUB-D485



RC3000-SUB-DV35



RC3000-SUB-DETH



RC3000-SUB-DETH×2

Main Technical Performance

System Parameters

| Supportable Channel Capacity: | Up to 240 channels at 64Kbit/s | Clock Frequency: | 2048KHz±50ppm |
|-------------------------------|--------------------------------|---|------------------|
| Frame Structuer: | ITU-T Recommendation G.703 | Clock Mode: | master, recovery |
| Performance Monitoring: | ITU-T Recommendation G.821 | Management Interface: | console, SNMP |
| Channel Interfaces | Channels Per Board | Interface Types | |
| E1 ports Board | 4/8 | E1 electrical port | |
| FXO/FXS/Hotline Board | 10 | FXO, FXS, Hot-line | |
| 2/4 Wire E&M / Magneto Board | 8 | E&M, Magneto | |
| Low Speed Data Board | 4/8 | G.703 co-directional at 64Kbps, V.24, RS232, RS422, RS485 | |
| High Speed Data Board | 1 | V.35, 10/100 Base-T Ethernet port | |

Electrical Interface: 2.048Mbit/s

| | | | |
|---------------------------|---------------------------------------|------------|----------|
| Bit rate: | 2048KHz±50ppm | Code: | HDB3 |
| Pulse Duration: | 244±25 ns | Frame mode | PCM30/31 |
| Pulse Mask: | ITU-T Recommendation G.703 | | |
| Impedance: | 75Ω unbalanced or 120Ω balanced | | |
| Nominal Peak Voltage Mark | 75Ω: 2.37V 120Ω: 3.0V | | |
| Intervene loss: | attenuation range is 0-6dB at 1024KHz | | |

Voice Interfaces

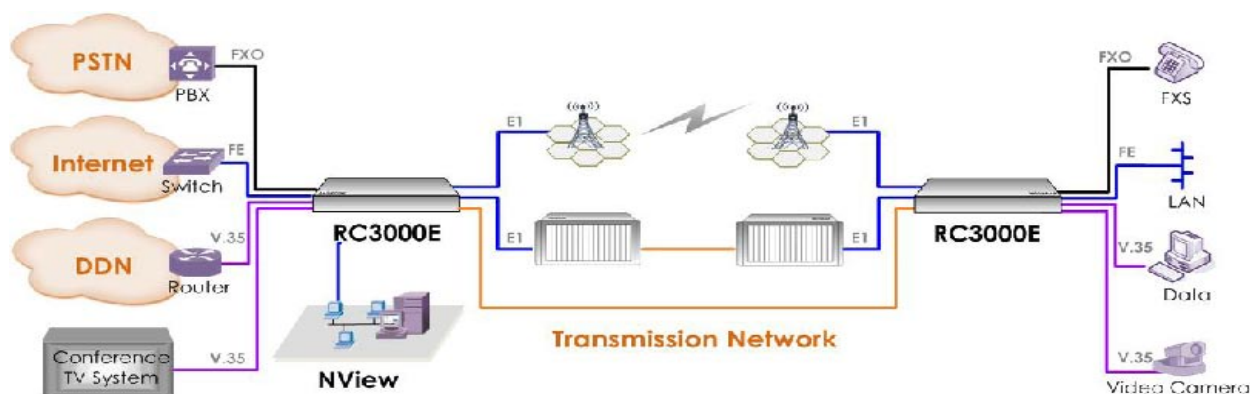
| Companding Law: | A-Law | Channel Sampling Rate: | 8KHz |
|----------------------------------|--------------------------------|------------------------------------|--|
| Maximum Impedance of DC Circuit: | 2000Ω | Overload Threshold: | +3.14 dBm0 |
| Frequency: | 300 to 3400Hz | Impedance: | 600Ω balanced |
| Group delay: | < 300μs | Idle channel noise: | ≤-67dB |
| Frequency character: | 300 Hz - 400 Hz:-0.3~-0.1 dB | 400 Hz -2 400 Hz:0.2~0.1 dB | 2400 Hz -3400 Hz:0~-0.7 dB |
| Crosstalk : | -65 dBm0, 300 to 3400Hz | Ring current voltage: | 25±3Hz,AC75±15V |
| Return Loss: | From 300 Hz to 600 Hz: > 12 dB | From 600 Hz to 3400 Hz: > 15 dB | |
| Total distortion | ITU-T Recommendation G.712 | Variation of gain with input level | ITU-T Recommendation G.712 |
| Attenuation/frequency distortion | ITU-T Recommendation G.712 | | |
| | Transmit Level | | Receive Level |
| 2-Wire channel | -3.5dBr±0.4dBr | -13dBm ~ +7dBm,adjustable | 0dBr±0.4dBr -3dBm~ +27dBm, adjustable |
| 4-Wire channel | +4dBr±0.3dBr | -13dBm ~ +7dBm,adjustable | +14dBr±0.3dBr -3dBm~+27dBm, adjustable |

Data Interfaces

| Data Type | Data Format | Bit rate | Characteristic |
|--------------------------|--|--------------------|-----------------------------------|
| 64Kbps Data Interface: | co-directional | 64Kbps | ITU-T Recommendation G.703 |
| V.24 Data Interface: | Synchronous | 64 kbps ~ 128 Kbps | ITU-T Recommendation V.24 |
| RS232 Data Interface: | Asynchronous | up tp 19.2Kbps | RS232 interface recommendation |
| RS422 Data Interface: | Asynchronous | up to 19.2Kbps | RS422 interface recommendation |
| RS485 Data Interface: | Asynchronous | up to 19.2Kbps | RS485 interface recommendation |
| V.35 Data Interface: | Synchronous | N×64Kbps, N=1~31 | ITU-T Recommendation V.35 |
| | | N×64Kbps, N=1~31 | IEEE 802.3 recommendation |
| Ethernet Data Interface: | Maximum frame length: 1912 byte rate | | Ethernet 10/100M Auto-Negotiation |
| | Support IEEE 802.1d Spanning Tree transparent transmission | | |
| | Support IEEE 802.1q VLAN transparent transmission | | |
| | Support IEEE802.3x flow control at full duplex mode | | |
| | support Auto-MDIX | | |

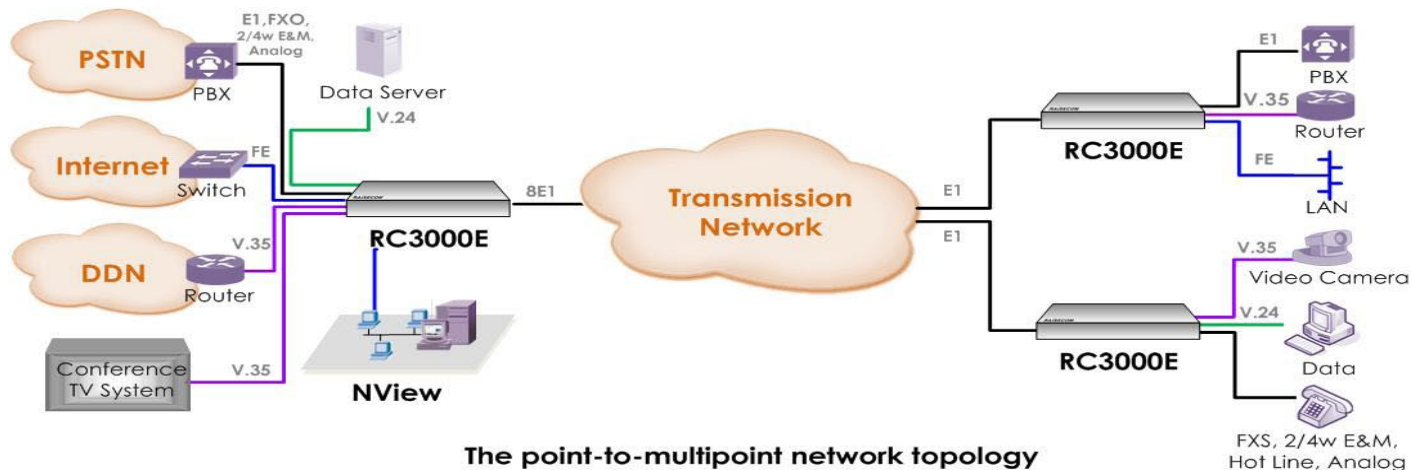
Typical Application

Point to Point Application



The point-to-point network topology

Point to Multi Point Application



The point-to-multipoint network topology

Ordering Information

| | |
|---------|--|
| RC3000E | RC3000E Multi Service Access Node chassis with with 1uplink slot and 3 downlink slots. RC3000E-XX XX represent the type of power supply RC3000E-AC/D : double AC power supply chassis RC3000E-DC/D : double DC power supply chassis RC3000E-AC/S : single AC power supply chassis RC3000E-DC/S : single DC power supply chassis RC3000E-AC_DC : mix one AC and one DC power supply chassis |
|---------|--|

Uplink module

| | |
|----------------------|--|
| RC3000E-UP-8E1 | Electrical E1 interface uplink unit, it provides 8×E1 75ohm unbalanced interfaces one DB37 connector. Adapter cable:E1 cable (CBL-E1-DB37F/16BNC-2.5) |
| RC3000E-UP-4E1 | Electrical E1 interface uplink unit, it provides 4×E1 75ohm unbalanced interfaces 8 CC3 connector. Adapter cable: E1 cable (CBL-E1-CC3/BNCF-1m / CBL-E1-CC3/BNCM-2.5M) |
| RC3000E-UP-4E1-BL | Electrical E1 interface uplink unit, it provides 4×E1 120ohm balanced interfaces 4 RJ45 connector. |
| RC3000E-UP-OPT-FE2E1 | Optical interface uplink unit, it has one optical interface for uplink and one electrical E1 interface for downlink.The optical interface provides 8×E1 and 1 100Base-T Fast Ethernet, and the electrical interface provides 2×E1. |

Downlink module

| | |
|------------------|--|
| RC3000-SUB-10FXS | 2-wire Foreign Exchange Subscriber (FXS) interface card, 10 interfaces per card, 3× RJ45 connectors. |
| RC3000-SUB-10FXO | 2-wire Foreign Exchange Office(FXO) interface card, 10 interfaces per card, 3×RJ45 connectors. |
| RC3000-SUB-8EM | 2/4 wire E&M trunk interface card, 8 interfaces per card, one SCIC female connector. Adapter cable : Voice cable (CBL-VOICE-SCSI50M(40)/NC-3m) |
| RC3000-SUB-DMT | Magneto Telephone interface card, it provides 8 magneto telephone channels per card, 2×RJ45 connectors. |
| RC3000-SUB-DC64K | Low speed 64Kbps Co-Directional G.703 data interface card, 4 interfaces per card, 2 ×RJ45 connectors. |
| RC3000-SUB-D232 | Low speed RS232 asynchronous data interface card, 8 channels per card, up to 19.2Kbps, 4×RJ45 connectors. |
| RC3000-SUB-D422 | Low speed RS422 asynchronous data interface card, 8 channels per card, up to 19.2Kbps, 4×RJ45 connectors. |
| RC3000-SUB-D485 | Low speed RS485 asynchronous data interface card, 8 channels per card, up to 19.2Kbps, 4×RJ45 connectors. |
| RC3000-SUB-DV24 | Low speed V.24 asynchronous data interface card, 4 channels per card, user selectable data rate N×64Kbps(N=1~2) up to 128Kbps, 4×RJ45 connectors. |
| RC3000-SUB-DV35 | High speed V.35 synchronous data interface card, 1 channels per card, user selectable data rate N×64Kbps (N=1~31) DCE, one HDB26 female connector. Adapter cable: V.35 cable (CBL-V35-HDB26M/M34F) |
| RC3000-SUB-DETH | High speed Ethernet interface card, it provides 1 channel 10 Base-T Ethernet port, data rate: N×64Kbps (N=1~31), 1×RJ45 connector. |
| RC3000-SUB-DETHB | High speed Ethernet interface card, it provides 1 channels 10/100 Base-T Ethernet port, data rate: N×64Kbps (N=1~31), 1×RJ45 connector. |

Ordering Information

Adapter Cable

| | |
|-----------------------------|---|
| CBL-E1-DB37F/16BNCM-2.5m | The E1 adapter cable of DB37 male connector to 16 BNC 75ohm unbalanced male connector with 2.5 meters, 8 ×E1 ports for one cable. |
| CBL-E1-CC3/BNCF-1m | The E1 adapter cable of CC3 female connector to BNC 75ohm unbalanced female connector with 1 meter, 2 cables per E1 port. |
| CBL-E1-CC3/BNCM-2.5M | The E1 adapter cable of CC3 female connector to BNC 75ohm unbalanced male connector with 2.5 meters, 2 cables per E1 port. |
| CBL-VOICE-SCSI50M(40)/NC-3m | The voice adapter cable of SCSI50 Male connector to blank wire cable,3m, 8 EM interfaces per cable |
| CBL-V35-HDB26M/M34F | The V.35 adapter cable of HDB26 male connector to DCE cable of M34 female connector, 2m |