



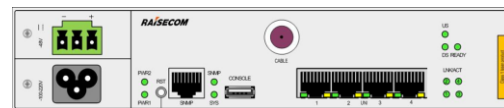
RAX711-H

DOCSIS 3.0 NID

Raisecom RAX711-H is the first generation DOCSIS NID which include 4*GE RJ45 nterfaces and 1 * coax interface in a compact size. RAX711-H supplies MEF CE2.0 carrier-grade service and helps the MSO to improve the business service level.

Based on the most cost-effective solution for cable MSOs to leverage their network and provide commercial services to business customers.

RAX711-H support 8*4 DOCSIS capacity, and combines the Cable Modem and L2 NID to reduce CapEx/OpEx;



RAX711-H-4GE-DC_AC

Highlights >>

Network Security

Upgraded security with port-isolation, basic ACL, broadcast/multicast/DLF storm control, unique port loopback detection, and DHCP Client/Option82 functionality

MEF CE2.0

MEF ELINE, ELAN, ETREE service available

Ethernet OAM

IEEE 802.3ah Link OAM, IEEE 802.1ag end-to-end connectivity OAM and ITU-T Y.1731 end-to-end service and performance, SLA reporting

Management

Auto-Provisioning, plug&play, single IP for all the connected remote devices, end to end configuration
Device management and VPN service management in Nview platform

SAT

Service activation test using Y.1564 up to 8 stream, act as a generator or a reflector

QoS

Advanced QoS technology allows stream-marking based on CoS, DSCP, IP precedence and priority; scheduling modes including SP, WRR, SP+WRR; WRED, flow-based mirroring/rate-limit/redirection/VLAN swapping and rewriting

Power Reliability

Dual hot-swappable power supply, with voltage/temperature alarms

TWAMP-Light

Standard IP SLA measurement, include generator and reflector

SLA Portal

B/S architecture, SLA TWAMP KPIs monitor(include FD, FDV, FLR, availability, bandwidth, bandwidth utilization)

E2E Provisioning

Standard MEF40 architecture, include bandwidth/performance/coslable profile GUI, standard service modules(ELINE, ELAN, ETREE), and End-to-End configuration based on service

DOCSIS Capacity

Support DOCSIS / EuroDOCSIS 3.0, 2.0, 1.1, 1.0 standard, and support 8*4 Capacity

Downstream:

Channel width: 6MHz

Bandwidth: 108-1002MHz

Bonding: up to 8 channels

Upstream:

Bandwidth: 6-42Hz

Bonding: Up to 4 channels

International Headquarters

East-11, Raisecom Building, No.10 Xibeiwang East Road,
Haidian District, Beijing. 100094, China
Tel: +86 10 8288 3305
Fax: +86 10 8288 3056
www.raisecom.com

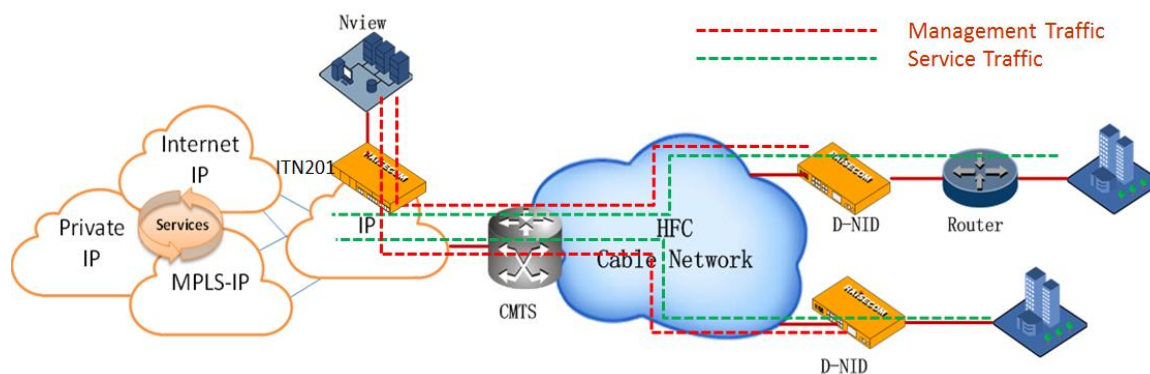
U.S.A. Headquarters

3031 north Rocky point Drive West Harborview
Building, Suite 100 Tampa Florida. 33607. USA.
Tel: +1 888 816 4808 ext 201
Fax: +1 727 547 9124
Email: ussales@raisecomusa.com

Raisecom Technology Co., Ltd.

Copyright@1999-2015
All rights reserved
Technical information is subjected to
change without notice

Application >>



D-NID Application

Large Enterprise, Small/Medium Business services Application

The RAX711-H can work in conjunction with the iTN201 for Large Enterprise, Small/Medium Business services. Its capacity, service-based QoS, and protection mechanism allow “cloud computing” applications, Imaging/video distributions, business data storage/recovery, Layer2-VPNs, etc. Meanwhile, such solutions enable Carrier-grade end-to-end SLA (hardware-based) performance monitoring for Ethernet jitter, frame delay and packet loss. Layer2/3 loopbacks enable service throughput testing and troubleshooting. The RAX711-H enables MEF CE2.0 L2VPN services over DOCSIS.

Solution Highlight:

1. The RAX711-H combines the Cable Modem and L2 NID to reduce CapEx/OpEx;
2. Carrier-level OAM and SLA help to improve the service quality;
3. Rapid service deployment based on unified network management platform;
4. DOCSIS3.0 is available, HFC BSoD intelligent solution;
5. Compact, Space-saving, power hot-swappable NID device;
6. If necessary, a SOHO router could connect D-NID to extend the solution;

International Headquarters

East-11, Raisecom Building, No.10 Xibeiwang East Road,
Haidian District, Beijing. 100094, China
Tel: +86 10 8288 3305
Fax: +86 10 8288 3056
www.raisecom.com

U.S.A. Headquarters

3031 north Rocky point Drive West Harborview
Building, Suite 100 Tampa Florida. 33607. USA.
Tel: +1 888 816 4808 ext 201
Fax: +1 727 547 9124
Email: ussales@raisecomusa.com

Raisecom Technology Co., Ltd.

Copyright@1999-2015
All rights reserved
Technical information is subjected to
change without notice



Key Features >>

Switching Mode	Store and forward mode; Supports jumbo frame
Ethernet	MTU:12,288 byte Up to 8k MAC Support 4,094 VLANs (C-tag), stacked VLANs (QinQ, S-tag) Layer 2 loopback on single and multiple flows Layer 2 control protocol (L2CP) handling
IP Services	DHCP client, option61 IPv4, Static management routing
Traffic Management	Service classification per port/VLAN/CoS(DSCP) Support SP, WRR and SP+WRR scheduling modes, and up to 8 queues per port MEF-compliant 3-color policing with color-aware and color-blind mode Bandwidth throttling per port/VLAN/CoS(DSCP), CIR/EIR per flow
Security	ACL based on VLAN, CoS, MAC, EtherType, IPv4, IPv6, or user-define RADIUS, TACACS+ Storm control (broadcast, multicast, DLF)
Reliability	Link aggregation group (LAG) Interface backup ITU-T G.8031 Ethernet link protection switching (ELPS) and G.8032 Ethernet ring protection switching (ERPS) with the automatic protection switchover time less than 50ms Port/VLAN-based Ethernet local loop detection Fault propagation AC&DC dual-feed power supplies
Ethernet OAM	IEEE 802.3ah EFM-OAM link management IEEE 802.1ag connectivity fault management (CFM) with 3.3ms CCM resolution ITU-T Y.1731 performance monitoring (PM) Hardware-based frame delay (FD) measurement Y.1564 TWMAP-Light Hardware-based SLA KPIs per port or EVC, which include throughput, delay, jitter, packet loss and availability Dying gasp message in case of power failure
Auto-Provisioning	Auto-establishment of management tunnels across L2/L3 networks
System Management	Remote management via SNMP v1/v2/v3, Telnet and SSH v1/v2 Local management via console interface MEF 36 compliant MIB

International Headquarters

East-11, Raisecom Building, No.10 Xibeiwang East Road,
Haidian District, Beijing. 100094, China
Tel: +86 10 8288 3305
Fax: +86 10 8288 3056
www.raisecom.com

U.S.A. Headquarters

3031 north Rocky point Drive West Harborview
Building, Suite 100 Tampa Florida. 33607. USA.
Tel: +1 888 816 4808 ext 201
Fax: +1 727 547 9124
Email: ussales@raisecomusa.com

Raisecom Technology Co., Ltd.

Copyright@1999-2015
All rights reserved
Technical information is subjected to
change without notice



KeepAlive, RMON, LLDP, Syslog
Port/VLAN/CoS-based statistics
SFP digital diagnostic management (DDM)
temperature and CPU monitoring
Voltage and temperature monitoring
Dual system

Fault Propagation

From line to client interface fault propagation (user configurable);
Client interface fault propagation

Specifications >>

Performance	Switching fabric: 8Gbps;
Physical Interface	Management port: 1 console (USB); 1 out band SNMP(RJ45) Client interfaces:4 x GE RJ45 Network interfaces:1 x Coax interface
Power Specs	100/240V AC, -36 to -72V DC 24V DC Full load: ≤25W
User Conditions	Operating temperature: -10~50°C ; Storage temperature: -25~70°C ; Humidity: 10~90% non-condensing
Dimensions	220(W)mm x 180(D)mm x 43.6(H)mm

Compliances >>

Standards & protocols	IEEE802.3,802.3u IEEE802.3ad Link Aggregation IEEE802.1p,802.1Q VLAN IEEE802.1ad QinQ IEEE802.3ah OAM IEEE802.1ag CFM ITU-T Y.1731 Services OAM ITU-T G.8031 ELPS ITU-T G.8032 ERPS IGMP v1/v2/v3 SNMPv1/v2c/v3 CE certified ,UL RoHS compliance EMI Class A MEF6,8,9,10,11,13,14,16,17,20,31,36 CE2.0- compliance DOCSIS / EuroDOCSIS 3.0, 2.0, 1.1, 1.0
-----------------------	--

	DOCSIS®	EURODOCSIS™
RF DOWNSTREAM		
Operating Frequency Range (center)	111 to 999 MHz	112 to 1002MHz
Tuner Frequency Range	Edge-to-edge 54-1002, 85-1002, 108-1002 MHz	108 to 1002MHz
Tuner	Full band capture frontend with 8 fully independent digital tuners	
Demodulation	8 demodulators, 64 QAM or 256 QAM	
Maximum Raw Data Rate	8 downstream channels, each 6 MHz channel: 42.88 Mbps for 256 QAM and 30.34 Mbps for 64 QAM	8 downstream channels, each 8 MHz channel: 55.62 Mbps for 256 QAM and 41.71 Mbps for 64 QAM

International Headquarters

East-11, Raisecom Building, No.10 Xibeiwang East Road,
Haidian District, Beijing. 100094, China
Tel: +86 10 8288 3305
Fax: +86 10 8288 3056
www.raisecom.com

U.S.A. Headquarters

3031 north Rocky point Drive West Harborview
Building, Suite 100 Tampa Florida. 33607. USA.
Tel: +1 888 816 4808 ext 201
Fax: +1 727 547 9124
Email: ussales@raisecomusa.com

Raisecom Technology Co., Ltd.

Copyright©1999-2015
All rights reserved
Technical information is subjected to
change without notice



Bandwidth per Channel	6MHz	8MHz
Operating Level Range	-15 to +15dBmV	+43 to +73 dBμV for 64 QAM +47 to +77 dBμV for 256 QAM
Input Impedance	75 ohms	
RF UPSTREAM		
Operating Frequency Range (edge-edge)	5 to 42 MHz, 5 to 65 MHz, or 5 to 85 MHz	5 to 65 MHz, or 5 to 85 MHz
Upstream Transmission	4 upstream channels	
Modulation	QPSK, 8 QAM, 16 QAM, 32 QAM, 64 QAM at ATDMA Mode QPSK, 8 QAM, 16 QAM, 32 QAM, 64 QAM, 128 QAM at SCDMA mode	QPSK, 8 QAM, 16 QAM, 32 QAM, 64 QAM at ATDMA Mode QPSK, 8 QAM, 16 QAM, 32 QAM, 64 QAM, 128 QAM at SCDMA mode
Maximum Data Rate per channel	Chnl Width (MHz) Raw Data Rate (Mb/s)	Chnl Width (MHz) Raw Data Rate (Mb/s)
Modulation		
QPSK	1.6 2.56	1.6 2.56
16 QAM	1.6 5.12	1.6 5.12
QPSK	3.2 5.12	3.2 5.12
16 QAM	3.2 10.24	3.2 10.24
32 QAM	3.2 12.8	3.2 12.8
8 QAM	6.4 15.4	6.4 15.4
16 QAM	6.4 20.5	6.4 20.5
32 QAM	6.4 25.6	6.4 25.6
64 QAM	6.4 30.72	6.4 30.72
RF	Female "F" type	

Ordering Information >>

RAX711-H-4GE-X

4 RJ45 interfaces, X = Pluggable 1:1 Hot-swappable dual redundant power - AC and/ or DC

International Headquarters

East-11, Raisecom Building, No.10 Xibeiwang East Road,
Haidian District, Beijing. 100094, China

Tel: +86 10 8288 3305

Fax: +86 10 8288 3056

www.raisecom.com

U.S.A. Headquarters

3031 north Rocky point Drive West Harborview
Building, Suite 100 Tampa Florida. 33607. USA.

Tel: +1 888 816 4808 ext 201

Fax: +1 727 547 9124

Email: ussales@raisecomusa.com

Raisecom Technology Co., Ltd.

Copyright©1999-2015

All rights reserved

Technical information is subjected to
change without notice